



BASIC DETAILS

ARCHITECTS

JAIIME PROUS

approx 1,228 sqm

3

4

BEDROOMS + OFFICE

BATHROOMS

Villa Sesom is a home where you will experience nature and the Mediterranean personality of PGA, through its 5 patios and expansive views over the golf course. This avant-garde piece of architecture, redefines a house as we know it, without sacrificing any comfort. Welcome to the most radical and modern experience in all PGA.

Show Villa Sesom House

General Specifications

Architecture & Interiors

- Villa designed by **JAIIME PROUS ARCHITECTS**
- Aluminum double glazing external doors and windows by **CORTIZO / TECHNAL**, with broken thermal bridge.
- Pictorial blinds automatically operated.
- Minimum floor to ceiling height of 2600 mm in main areas.
- Visible in the main rooms of the house.
- Natural Stone or Porcelain tiles in bath and underground flooring.
- White lacquered wardrobes and cabinets.
- Natural timber internal doors.
- HQ Light fittings.
- HQ Electric fittings.
- Automatic lighting system centrally operated.
- Air Conditioning system.
- Underfloor heating with automatic controls.
- Centralized intruder alarm with passive infrared sensors.
- DURAVIT sanitary fittings, HQ taps.
- Gas and water leak detectors.
- Domotics control for lighting, blinds, A / C and heating

Kitchen

- BULTHAUP range Kitchen.
- NEFF induction hob.
- Oven, Microwave, Dishwasher, Fridge and Freezer by **NEFF**.

Master bedroom ensuite

- Natural stone slate vanity unit top.
- Enclosed shower area and WC.

Underground

- Facilities Room
- Multiple use rooms for possible Spa, Gym, Play room or wine cellar construction.

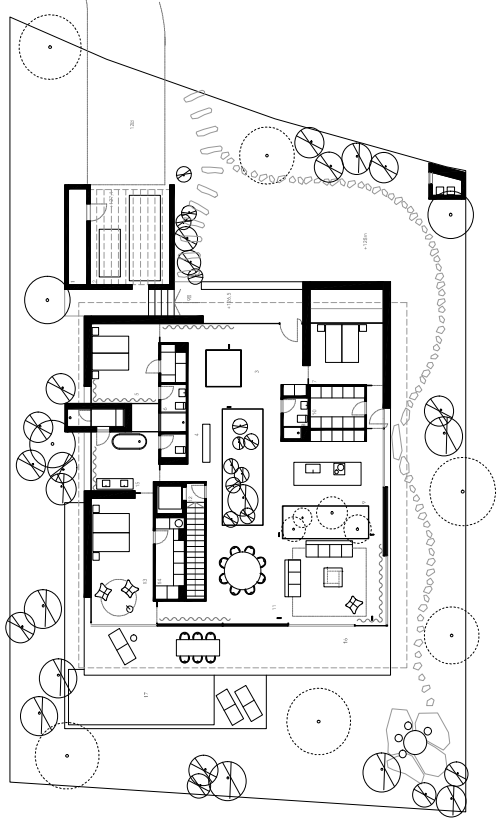
Exteriors

- Infinity pool, with beach access.
- Natural Stone or Porcelain tiles flooring in terraces and courtyards.
- Kitchenette.
- Automatic irrigation system in a Mediterranean Garden.

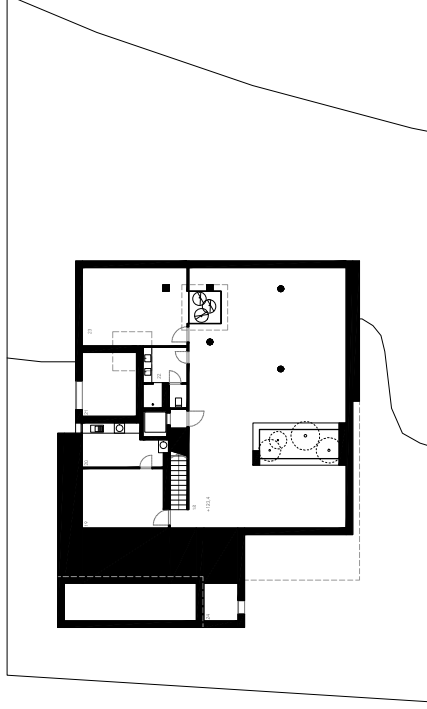
Energy performance

- Highly insulated roof with polystyrene and gravel finish.
- Highly efficient vacuum tubes solar panels.
- Gas supply as low cost fuel source.
- Water harvesting tank. Water to be reused for irrigation purposes.
- Reinforced concrete construction with internal and external brick walls with a high thermal value.

Estimated built areas, counting the 100% of the surface area of the property, 50% of the covered patios. Approximate terrace surface counting is 100%. This is a document provided for information purposes only, the Developer reserves the right to modify the figures and features & specifications because of technical or legal circumstances, the developer reserves the right to change the finishes for others of equal or higher quality than those specified.



GROUND FLOOR



BASEMENT FLOOR

SESOM HOUSE SHOW VILLA

Ground Floor	
Internal Areas.....	284,65 m2
Basement Floor	
Internal Areas.....	254,55 m2
Total Internal Areas.....	539,20 m2

Ground Floor	
External Areas.....	85,30 m2
Basement Floor	
External Areas.....	12,60 m2
Total External Areas.....	97,90 m2

